

*LSUHSC-S Renal Pathology Consultative Services  
Interesting Case*

**Case Study #: 6**  
**09/28/09 Questions**

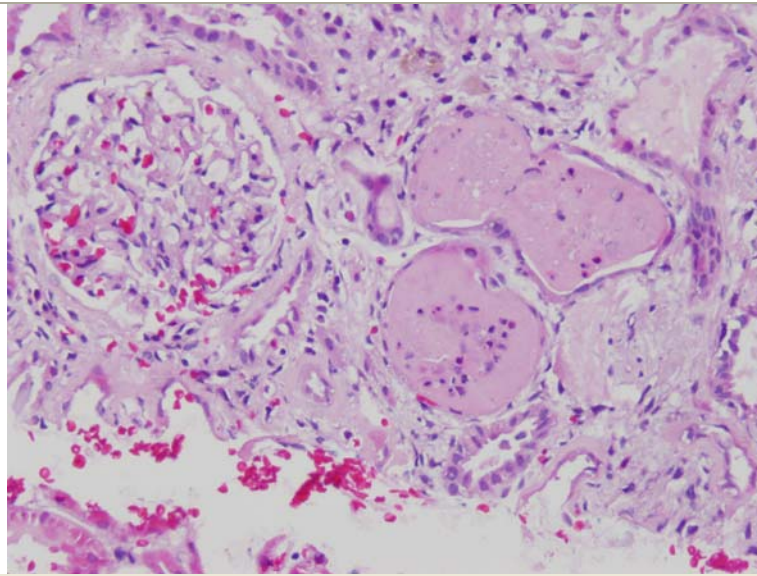
**By: Stephen M. Bonsib, M.D.**  
**Xin Gu, M.D.**  
**Ami Bhalodia, M.D.**

318-675-4557 phone  
318-675-4541 fax  
sbonsi@lsuhsc.edu

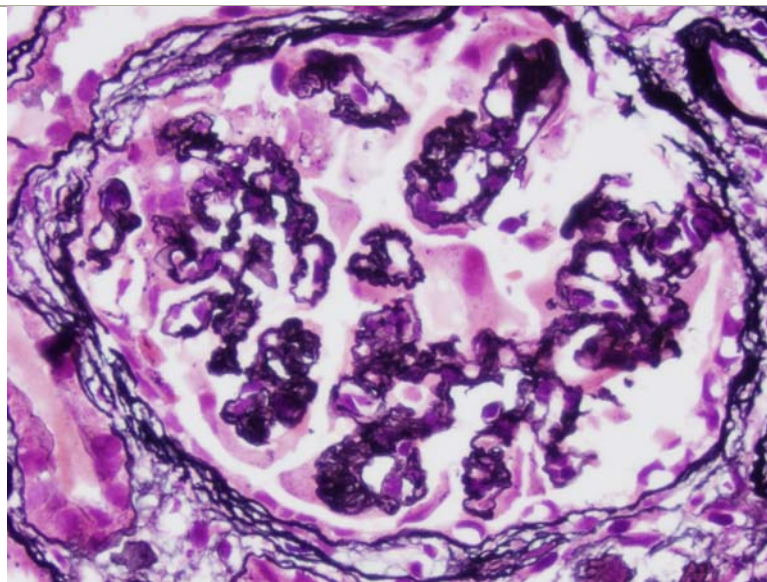
**Clinical History:**

**70 year old female with a history of hand-foot syndrome and recurrent multiple myeloma. Creatinine was 1.5 and albumin was 1.7 at time of presentation.**

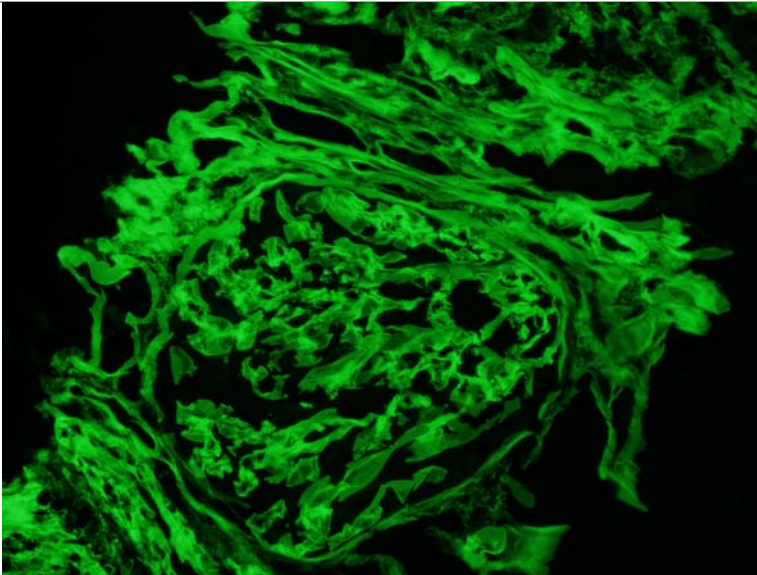
**Case courtesy of Dr. Glenn McDonald, MD**



**Figure 1: H&E stain shows dilated tubules and attenuated tubular epithelium.**

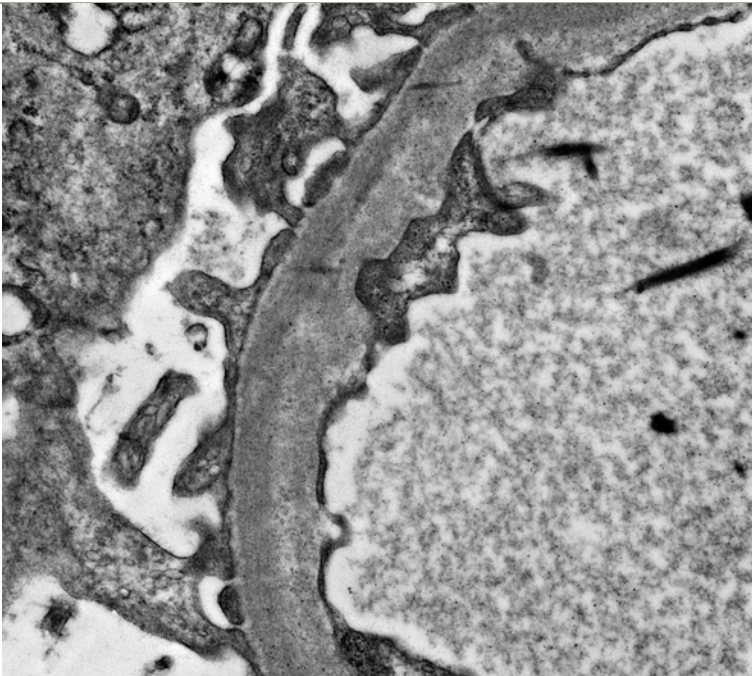


**Figure 2: JM silver stain reveals a distinctive glomerular abnormality.**



**Figure 3: Lambda IF stain showed diffuse capillary loop, mesangial matrix and tubular basement membrane reaction.**

**The Kappa, IgG, IgM, C3, C1q, and fibrin IF stain showed no reaction.**



**Figure 4: EM demonstrates pale granular deposits along the inner surface of the capillary loops. Similar deposits were present within the mesangial matrix and outer aspect of the tubular basement membrane.**

**Question:**

1. What is your diagnosis based on the H&E and JMS findings on light microscopy (Figs 1 and 2)?
2. What are infectious and drug related causes of this entity?
3. What is your diagnosis based on the IF and EM findings (Figs 3 and 4)?
4. What other diseases are associated with a single light chain staining reaction?

**Answer:**

Answer to be provided via e-mail next week.